

Franklin County Pollinator Pathway

Second Interest Meeting 7.18.2024

Hybrid @ Franklin Soil and Water Conservation District (FSWCD)

Facilitators

- Madison Wisniewski, Conservation Implementation Specialist @ FSWCD / Rain Garden Coordinator
 - mwisniewski@franklinswcd.org
- Mikaela Mohr, Outreach Program Specialist @ FSWCD / Community Backyards Coordinator
 - mmohr@franklinswcd.org

Agenda & Minutes

Meeting Recording Link: <https://youtu.be/h0VWA8E-i0Q>

Begin at 5:35pm

- Welcome
- Licking County Pollinator Pathway – Susan King (presentation file in Attachment A)
 - Q&A
- General Discussion & Upcoming Events/Announcements

End at 7:00pm

Pollinator Pathway Events

- Franklin County Pollinator Pathway will be tabling at their very first event – Columbus Arborfest!
 - Columbus Arborfest, Saturday August 24, 1-5pm @ Whetstone Park
 - <https://columbusarborfest.com/>

Community Events & Resources

- **GRANT OPPORTUNITY!** Wild Ones Lorrie Otto Seeds for Education Grant
 - Applications are open July 14 – November 15, 2024 for the 2025 planting season. This particular grant seeks projects that have youth engagement/education component.
 - General info: <https://wildones.org/seeds-for-education/>
 - Direct grant application link: <https://wildones.org/seeds-for-education/sfe-application/>
- Scioto Gardens Native Plant Nursery Grand Reopening
 - Saturday July 27, 10am-6pm @ new location (2870 Curve Rd, Delaware, OH)
 - <https://sciotogardens.com/event/grand-re-opening/>
- Franklin Park Conservatory's Community Days
 - Sunday August 4 (first Sunday of every month, 10am-5pm)

- Free for City of Columbus and Franklin County residents! Resources tables are also available on those days.
 - <https://www.fpconservatory.org/events/august-community-day/>
- FSWCD Community Backyards Workshops (get your native plant rebate before they run out!)
 - August 17 – Virtual Composting Tips & Tricks on Zoom
 - <https://www.communitybackyards.org/Workshop>
- Friends of the Lower Olentangy Watershed – Volunteer Days (invasive removals, native plantings or maintenance, clean ups)
 - Find events at https://www.olentangywatershed.org/?page_id=69
- Friends of Alum Creek & Tributaries – Volunteer Days (invasive removals, native plantings or maintenance, clean ups)
 - Find events at <https://www.facebook.com/FriendsofAlumCreek/>
- Green Columbus – Find volunteer days & networking events
 - <https://www.greenbus.org/events>

Pollinator Pathway of Franklin County Meeting

July 18, 2024



Introductions



Madison Wisniewski
Conservation
Implementation Specialist

Mikaela Mohr
Outreach Programs Specialist



Craig Toothman
Central Ohio Ambassador



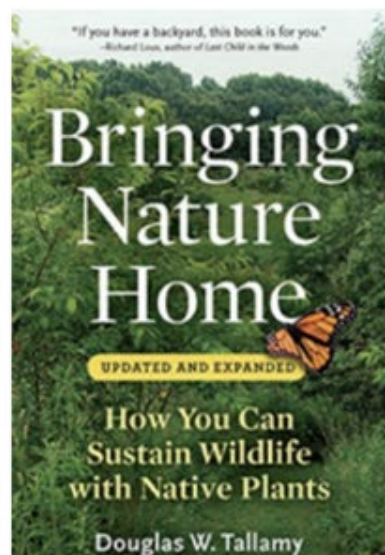
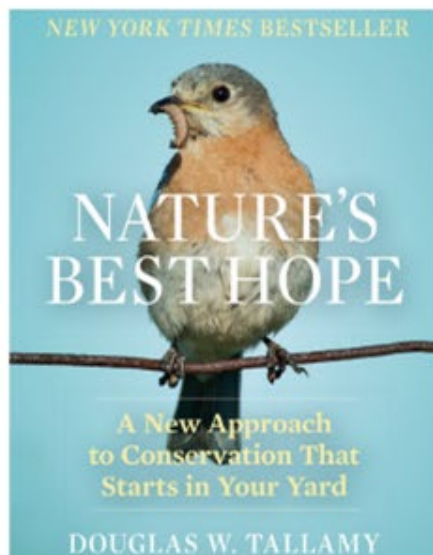
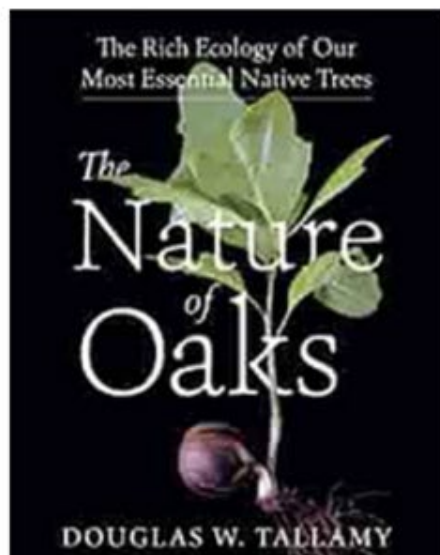
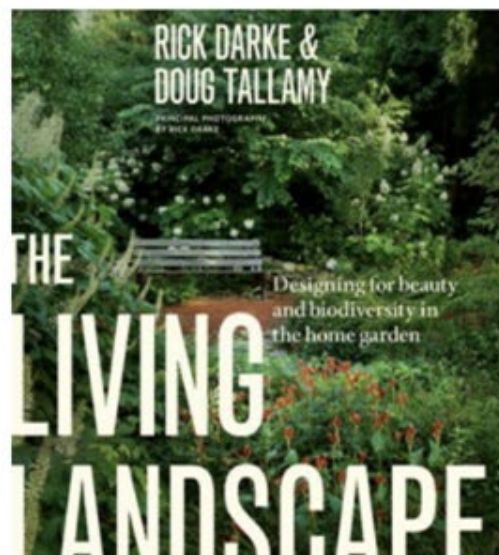


Pollinator Pathway

Susan Studer King
LickingPollinatorPathway.org

A little about me











THE OHIO STATE UNIVERSITY

COLLEGE OF FOOD, AGRICULTURAL,
AND ENVIRONMENTAL SCIENCES

POLLINATOR HABITAT 101

An Introduction and Refresher

[HOME](#)

[LEARN WITH US](#)

[RECORDINGS](#)

[MORE WEBINARS](#)

[OSU BEE LAB](#)

[DONATE](#)



Doug Tallamy
The University of
Delaware



Harland Patch
Penn State
University



Heather Holm
Author and
Biologist



Matthew Shepherd
The Xerces Society
for Invertebrate
Conservation



Shana Byrd
The Dawes Arboretum



Join us for two special events with
DOUG TALLAMY

PUBLIC LECTURE

December 5

7 - 8:15 p.m.

Denison University > Swasey Chapel

by invitation only:

LANDSCAPE PROFESSIONAL LUNCHEON

December 6

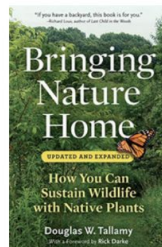
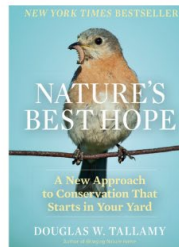
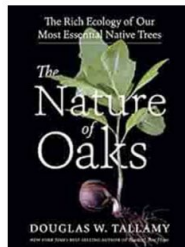
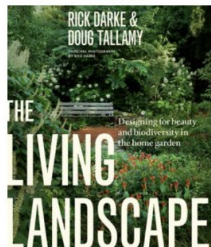
12:30 - 2 p.m.

**Otterbein Granville > Amelia Room
2158 Columbus Rd, Granville, OH 43023**

————— register by November 18 at: <https://tinyurl.com/393a2pwh> —————

Doug Tallamy is the T. A. Baker Professor of Agriculture in the Department of Entomology and Wildlife Ecology at the University of Delaware, where he has authored 106 research publications and has taught insect-related courses for 41 years. Chief among his research goals is to better understand the many ways insects interact with plants and how such interactions determine the diversity of animal communities.

His books include *Bringing Nature Home*, *The Living Landscape*, co-authored with Rick Darke, *Nature's Best Hope*, a New York Times Best Seller, and *The Nature of Oaks*, winner of the American Horticultural Society's 2022 book award. In 2021 he co-founded Homegrown National Park with Michelle Alfandari. His awards include recognition from The Garden Writers Association, Audubon, The National Wildlife Federation, Allegheny College, The Garden Club of America, and The American Horticultural Association.



Sponsored by:

Denison University, Licking Land Trust, Otterbein Granville,
Granville Public Library, 1500 Trees & Ace of Clubs 4-H





Western Reserve
Land Conservancy

land • people • community

[News](#)

[Publications](#)

[Events](#)

[Connect With Us](#)

[What We Do](#)

[Special Projects](#)

[Properties For Sale](#)

[Who We Are](#)

[Get Involved](#)

[Carbon Credits](#)

Inviting Biodiversity into Our Gardens

Five-part Virtual Symposium



- Schools
- Land Trusts
- Nature Centers
- Conservation Commissions
- Garden Clubs
- Master Gardeners
- Watershed Associations



Wilton Land
Conservation Trust



Managed at the local level, by existing organizations choosing how to fit the Pollinator Pathway into their local culture.



Pollinator Pathway

Licking Land Trust | The Dawes Arboretum | Licking Park District | Denison |
The Ohio State University Newark | U.S. Fish & Wildlife Service | Granville
Public Library | Sanctuary Garden at Newark High School | Licking Soil & Water
Conservation District | Granville Schools Sustainability Project | Ace of Clubs 4-
H | Otterbein Granville | 1500 Trees | Grange Insurance Audubon Center | Licking
County Master Gardener Volunteers | Wild Ones Columbus |
Licking County Community Center for 60+ Adults

LickingPollinatorPathway.org



Pollinator Pathway
promotes native
plant landscapes and
works to connect
public parks and
private land to
create a continuous
corridor of
pollinator-friendly
habitat.





Add your property to the Pollinator Pathway

- Plant trees, shrubs & flowers that are native to Ohio
- Remove invasive plants
- Reduce the size of your lawn
- Adopt pollinator-friendly property maintenance practices

Promoting Partner Organization Events

<https://www.lickingpollinatorpathway.org/events>



DENISON UNIVERSITY Earth Day

DAY OF SERVICE
Monday, April 22, 2024
8:30 a.m. - 4:30 p.m.
Denison Bioreserve

Join Pollinator Pathway and Denison for a "Bittersweet Blitz" to remove bittersweet vines (*Celastrus orbiculatus*) and other invasive plants. TV volunteer shifts throughout the day.

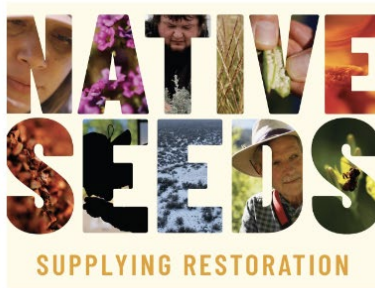
[SIGN UP FOR A SHIFT](#)



THE DAWES ARBORETUM Arbor Day Festival

& SPRING PLANT SALE
Saturday, April 27, 2024
10 a.m. - 2 p.m.
The Dawes Arboretum
7770 Jacksontown Rd
Newark, Ohio

[LEARN MORE](#)



DINNER & DOCUMENTARY Native Seeds

FILM SCREENING
Monday, May 6, 2024
Doors open at 5 p.m. Film starts at 5:30
free dinner for first 30 attendees
Denison University
Huffman Dining Hall
Granville, Ohio

[VIEW CAMPUS MAP](#)



Pro tip: offer a lead magnet
(free seeds or native plant!)



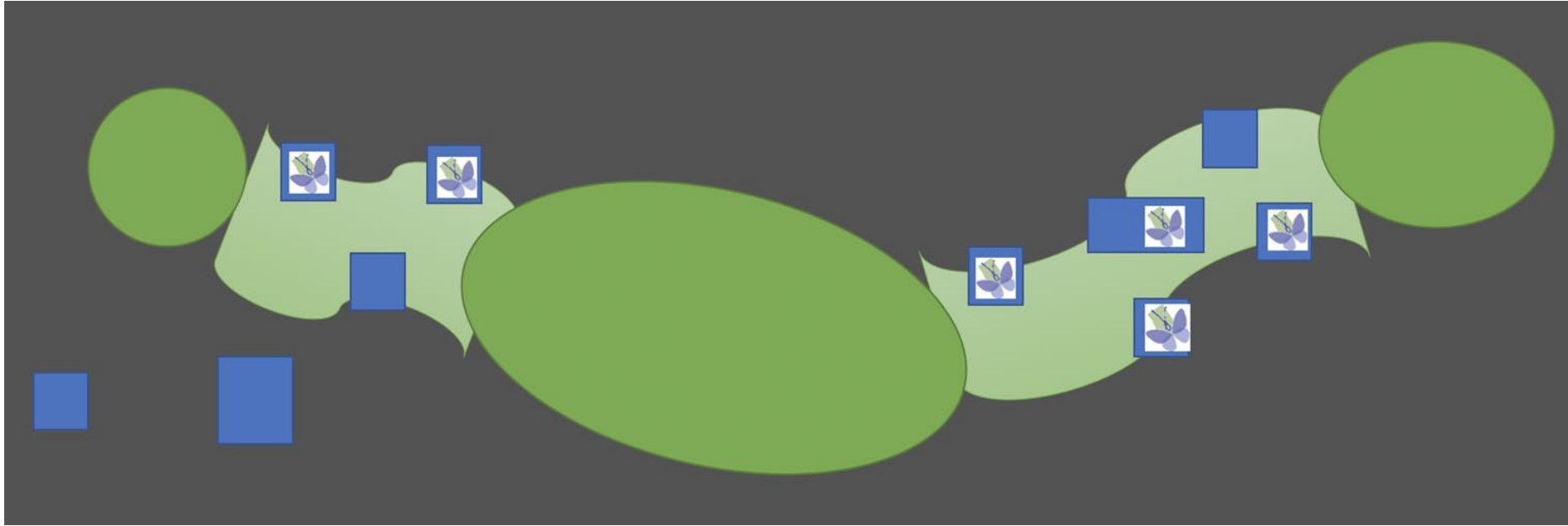
Pollinator Pathway: Why it works

- The power of a charismatic character as conversation starter
- Positive message framed around local action
- Simple, affordable (free) ...and fun.
- It's decentralized and flexible – a Pathway can be a single street, a neighborhood, community or county
- Gives people an excuse to reach across boundaries and talk



Pollinator Pathway

Creating corridors of public and private properties that provide native plant habitat and nutrition for pollinators

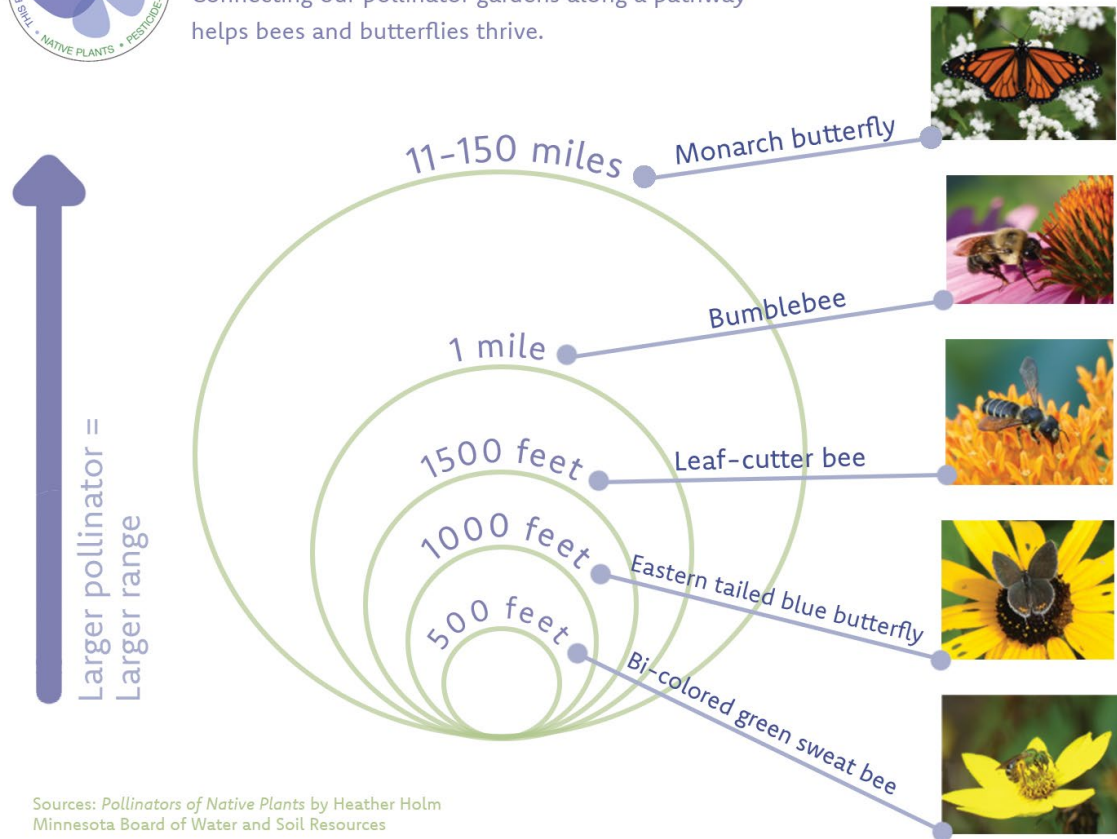


CONNECTING Organizations | Communities | Habitats



How Far Can A Pollinator Fly to Find Food?

Connecting our pollinator gardens along a pathway helps bees and butterflies thrive.



Sources: *Pollinators of Native Plants* by Heather Holm
Minnesota Board of Water and Soil Resources



Even the smallest
pollinator plots can have
an impact





https://youtu.be/_DRs91m4rv8?si=U821PURgQ-VYEEut



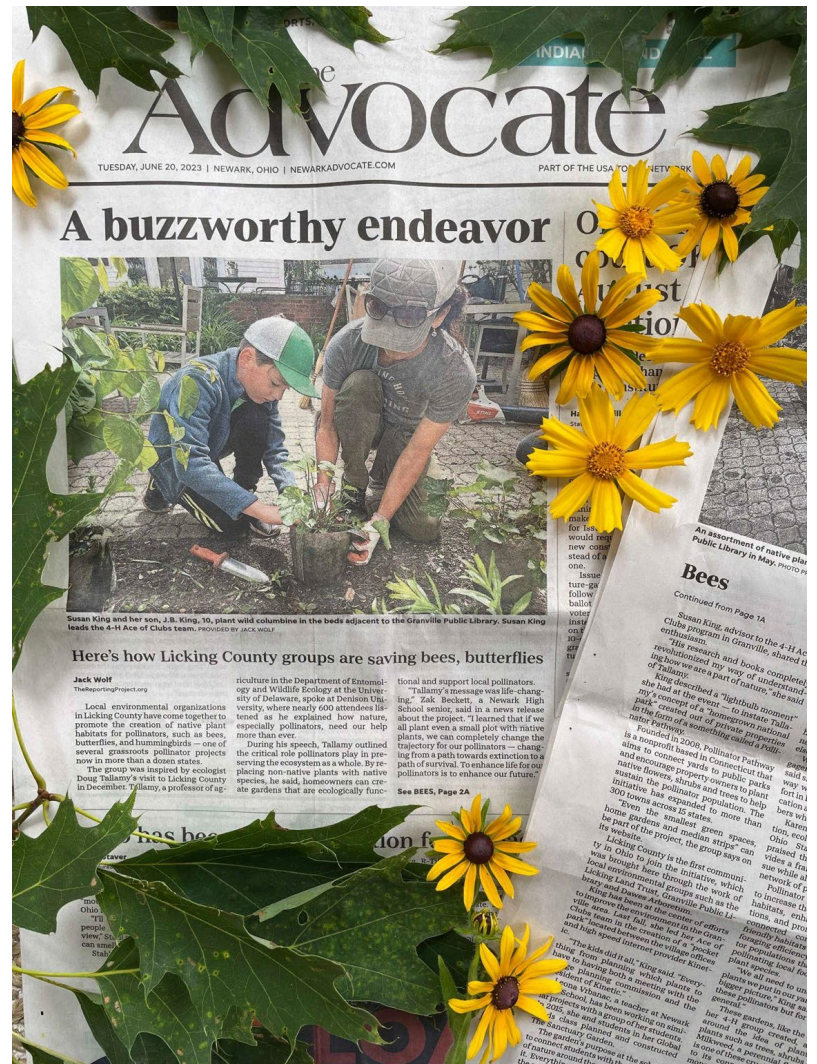
Before



After

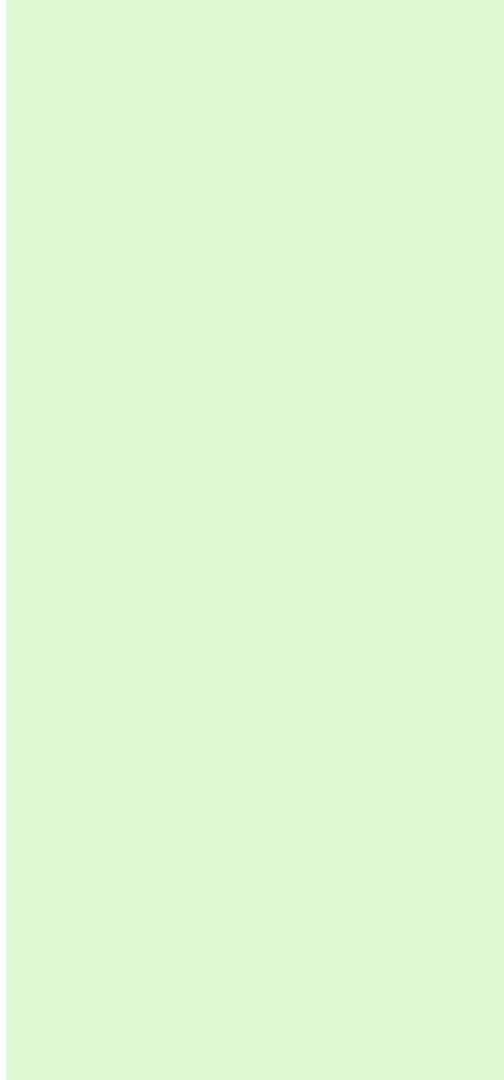
Ace of Clubs 4- H Project











Featured properties on the Broadway Pathway



Robbins Hunter
Museum

221 E. Broadway

Plants include: hairy alum root (*Heuchera villosa*), sweet Joe Pyweed (*Eupatorium purpureum*), and columbine (*Aquilegia canadensis*)



Granville Public
Library

217 E. Broadway

Plants include: butterfly milkweed (*Asclepias tuberosa*), rattlesnake master (*Eryngium yuccifolium*), wild geranium (*Geranium maculatum*) aster and goldenrod.



Kinetic Pocket Park

131 E. Broadway

Plants include: rose milkweed (*Asclepias incarnata*), purple coneflower (*Echinacea purpurea*) New Jersey Tea (*Ceanothus americanus*), culver's root (*Veronicastrum virginica*), Jacob's ladder (*Polemonium reptans*).



United Church of
Granville

115 W. Broadway

Plants include: bee balm (*Monarda* spp.), columbine, (*Aquilegia canadensis*) winterberry, (*Ilex verticillata*), foxglove beardtongue (*Penstemon digitalis*), New England Aster (*Symphyotrichum novae-angliae*)

Seed Collection



Stock Community Seed Libraries



Grow Your Own Native Plants Workshops



7 workshops | 6 partner organizations
Newark | Pataskala | Johnstown | Homer | Granville

Native Plant Sales & Plant Swaps



Invasive Plant Awareness



Replace with these →



Native Dogwood



Eastern Redbud



Serviceberry

Bradford Pear “Bounty” Program

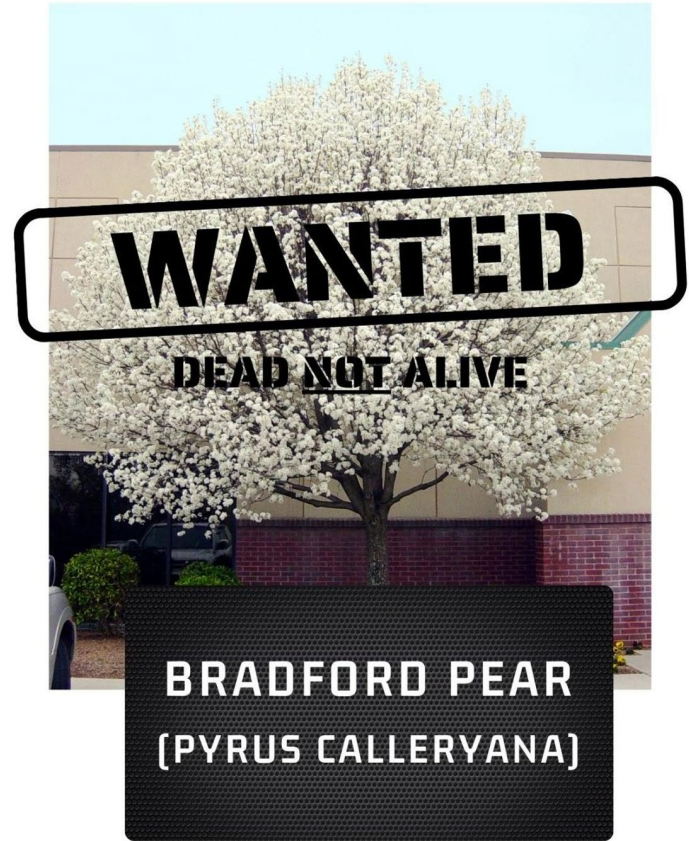
REWARD IF REMOVED

Description: highly-invasive medium-sized tree with stinky white flowers & messy fruit

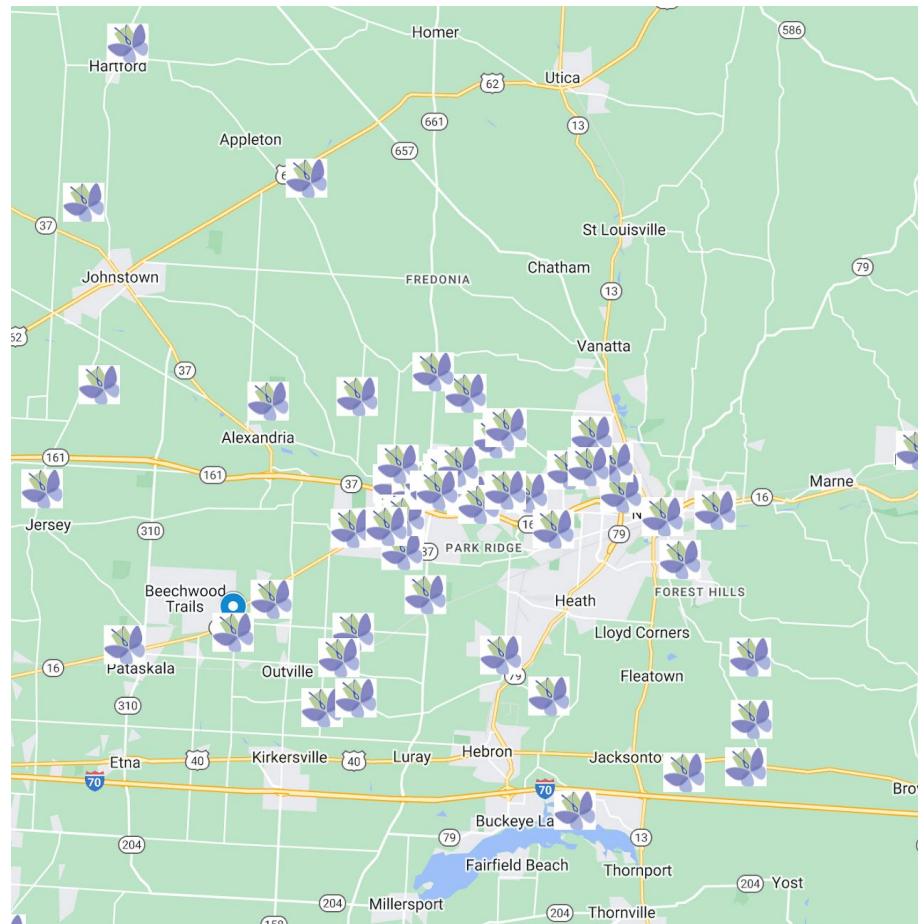
Last seen: invading woodlands, pastures, roadsides & parks

Aliases: Callery Pear, Cleveland Select, Chanticleer

ILLEGAL TO PLANT IN OHIO



<https://arcg.is/0nCviL>
Other example of storyMap

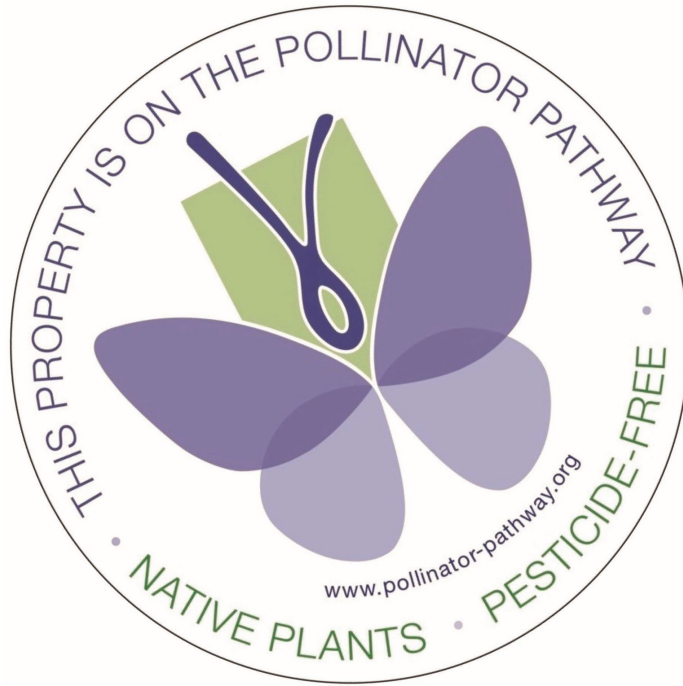




Pollinator Pathway

Licking Land Trust | The Dawes Arboretum | Licking Park District | Denison |
The Ohio State University Newark | U.S. Fish & Wildlife Service | Granville
Public Library | Sanctuary Garden at Newark High School | Licking Soil & Water
Conservation District | Granville Schools Sustainability Project | Ace of Clubs 4-
H | Otterbein Granville | 1500 Trees | Grange Insurance Audubon Center | Licking
County Master Gardener Volunteers | Wild Ones Columbus |
Licking County Community Center for 60+ Adults

LickingPollinatorPathway.org



Add your property to the Pollinator Pathway

- Plant trees, shrubs & flowers that are native to Ohio
- Remove invasive plants
- Reduce the size of your lawn
- Adopt pollinator-friendly property maintenance practices







Pollinator Pathway

www.LickingPollinatorPathway.org



Quercus (Oak)

Prunus (American Plum, chokecherry), Birch

Acer (Maple), Solidago (Ohio, zigzag
goldenrod)

Willow, Symphyotrichum (Asters)

Liatris (Blazing star), Asclepias (Milkweed)

Baptisia (False Indigo), Trillium, Sedges

Pycnanthemum (Mountain mint), Ferns

Peonies, Daffodils, Hellebores, Hosta

Boxwood, Ginko, Euonymous, Spirea

Bradford Pear, Barberry, Bush Honeysuckle

Burning Bush, Butterfly Bush, Privet, Vinca

**Native Keystone
Species**

Native

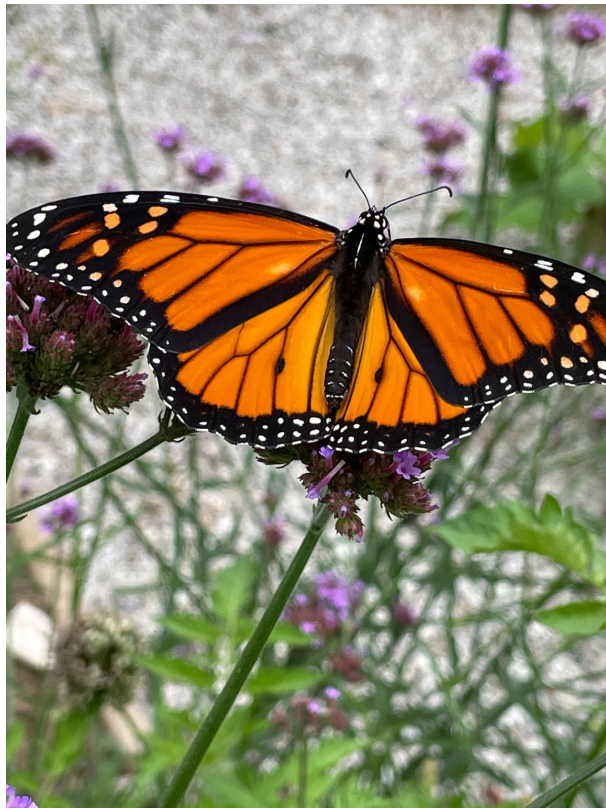
Non-native

Invasive
(escaped cultivation &
outcompete natives)

Desirable



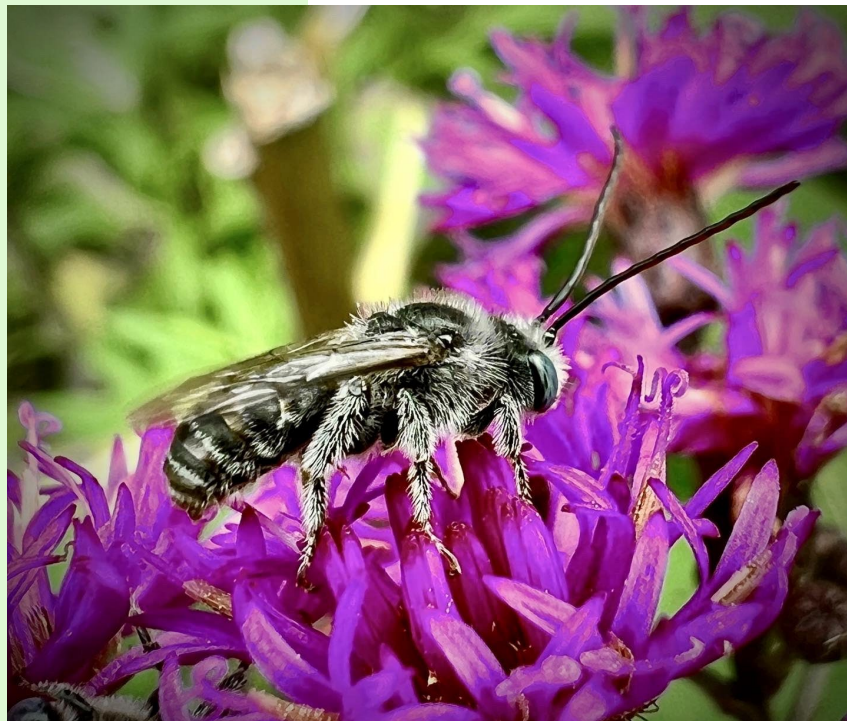
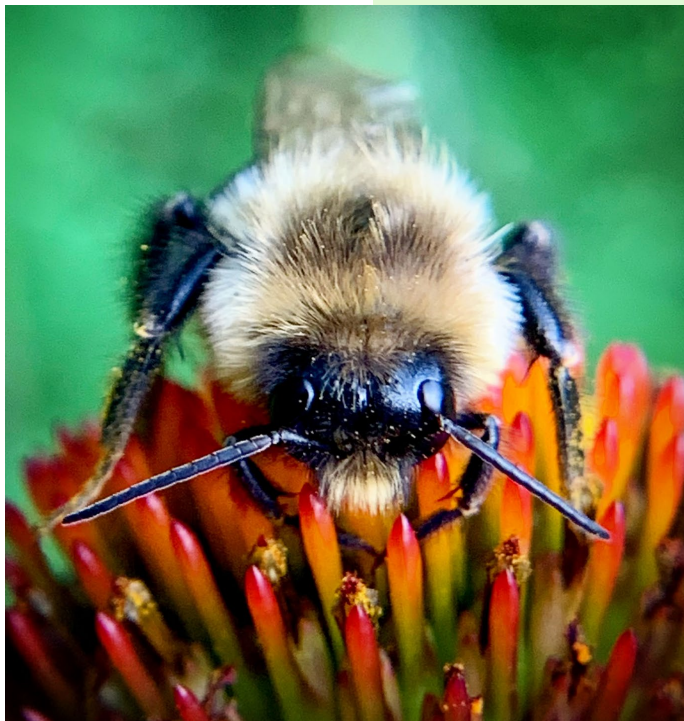
Undesirable







Ian Meske



Specialist bees comprise about 25% of the bee population in Ohio.





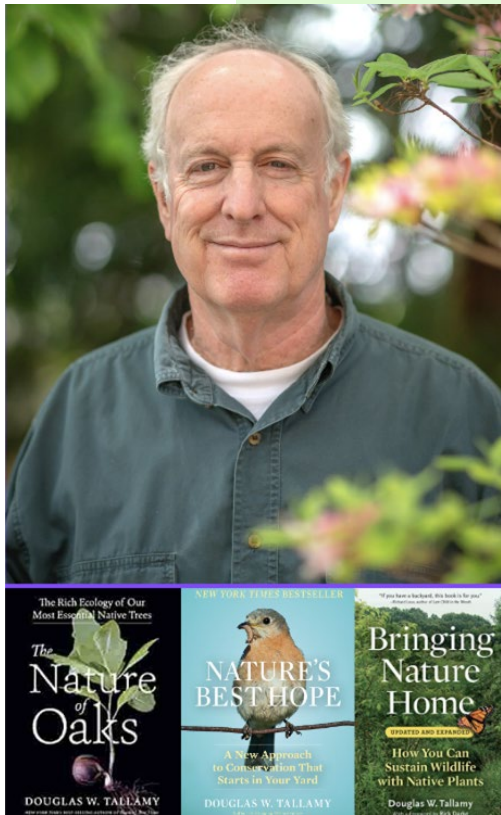


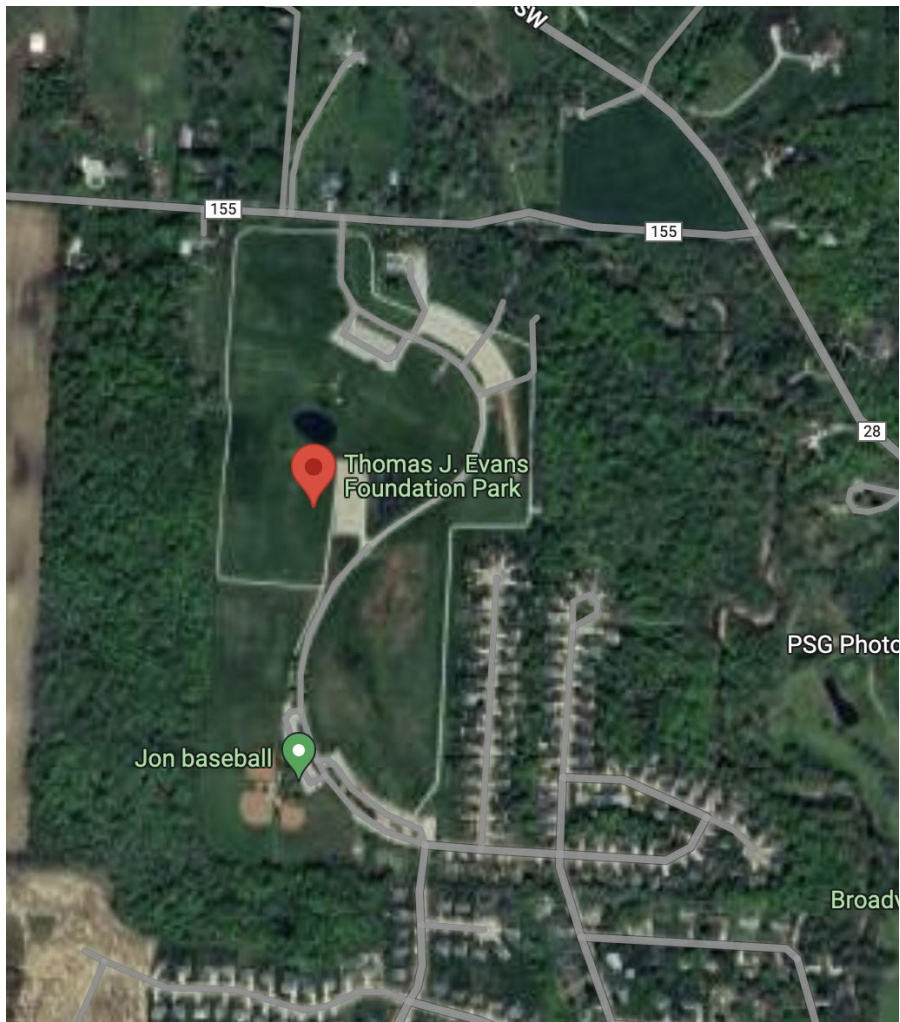






Doug Tallamy







FEATURE

The Insect Apocalypse Is Here

What does it mean for the rest of life on Earth?

The Washington Post
Environmental News Service



POLLINATORS IN PERIL



Animals

North America has lost 3 billion birds in 50 years

North American bird population dropped by nearly 30 percent in last 50 years



AP

Monarch butterfly population moves closer to extinction

By OLGA R. RODRIGUEZ January 19, 2021



The birdwatchers will nearly 3 billion birds representing hundreds of species over the past five decades. (The Washington Post)

By Katie O'Rourke

September 15, 2020 at 2:00 p.m. EDT

Slowly, steadily and almost imperceptibly, North America's bird population is dwindling.

Support the Guardian

Available for everyone, funded by readers

Contribute →

Subscribe →

Search jobs Sign in Search

News

Opinion

Sport

Culture

Lifestyle

More →

Environment ► Climate change Wildlife Energy Pollution

Pesticides

● This article is more than 1 month old

Toxic impact of pesticides on bees has doubled, study shows

Analysis contradicts claims that the environmental impact of pesticides is falling, say scientists



Duncan Carrington
Environment editor

@dpcarrington
Thu 1 Apr 2021 14:00 GMT

f t in

1,794



